



- Fry-Top Cuociadina
- Fry-Top for Piadina
- Grillplatten Für Piadina
- Plaque / Fry-Top pour Piadina et Saucisse
- Fry-Top para Piadina



- Fry-Top CuociPiadina
- Fry-Top for Piadina
- Grillplatten Für Piadina
- Plaque / Fry-Top pour Piadina et Saucisse
- Fry-Top para Piadina

## FRY-TOP CUOCIPIADINA

- Struttura interamente realizzata in acciaio inox AISI 304 18/10
- Modelli da banco (...BB), su gambe (...GG), su vano aperto (...BA) o su vano chiuso (...BC)
- Piano di cottura realizzato in acciaio dolce:
- \* liscio nei modelli FTSP/... - FTMP/... - LTMP/...
- \* bordato su quattro lati, con foro di scarico e cassetto raccolta residui, nei modelli FTSPS/... - FTMPS/... - LTMPS/...
- Camino di scarico fumi posteriore
- Bruciatori gas ad alto rendimento, indipendenti:
  - . nr.1 bruciatore nei modelli FTSP-S/1P... - FTSP-S/1G... - FTMP-S/1G... - LTMP-S/1G...
  - . nr.2 bruciatori nei modelli FTSP-S/2P... - FTSP-S/1G1P... - FTMP-S/2G... - LTMP-S/2G...
  - . nr.3 bruciatori nei modelli FTSP-S/3G... - FTMP-S/3G... - LTMP-S/3G...
  - . nr.4 bruciatori nei modelli FTMP-S/4G... - LTMP-S/4G...
- Bruciatori gas a tre tubi fiamma ad alto rendimento con rubinetto valvolato, termocoppia e accensione piezo elettrica, con regolazione temperatura max-min
- Manopole in materiale atermico
- Piedini regolabili in acciaio inox AISI 304 18/10

## GRILLPLATTEN FÜR PIADINA

- Gesamtstruktur vollständig aus Edelstahl AISI 304 18/10
- Tischgeräte (...BB), unterbau offen (...BA), oder mit Tür geschlossen (...BC),
- Kochflächen aus Stahl:
- \* glatt im Modell FTSP/... - FTMP/... - LTMP/...
- \* glatt mit Spritzschutz-Aufkantung auf vier Seite, mit Lock und ausziehbare Fettablaufschublade im Modell FTSPS/... - FTMPS/... - LTMPS/...
- Kamin
- Leistungsstarke Gasbrennern:
  - . nr.1 Brenner im Modell FTSP-S/1P... - FTSP-S/1G... - FTMP-S/1G... - LTMP-S/1G...
  - . nr.2 Brenner im Modell FTSP-S/2P... - FTSP-S/1G1P... - FTMP-S/2G... - LTMP-S/2G...
  - . nr.3 Brenner im Modell FTSP-S/3G... - FTMP-S/3G... - LTMP-S/3G...
  - . nr.4 Brenner im Modell FTMP-S/4G... - LTMP-S/4G...
- Leistungsstarke Gasbrennern mit Gashahn, Thermoelement und Piezozündung
- Gashahn mit Temperaturregulierung min-max, Pilotflamme, Thermoelement, und Piezozündung
- Drehknöpfe aus wärmegehärtetem Material
- Höhenverstellbare Füße aus Edelstahl AISI 18/10

## FRY-TOP FOR PIADINA

- Entirely of AISI 304 18/10 stainless steel
- Bench type models (...BB), on open stand (...BA), or with closed cupboard (...BC)
- Cooking surface in stainless steel:
- \* flat in models FTSP/... - FTMP/... - LTMP/...
- \* flat with a small splashback on four sides, with hole and a removable fat collection drawer FTSPS/... - FTMPS/... - LTMPS/...
- Rear smoke flue
- High efficiency gas burners, to obtain independent cooking areas:
  - . nr.1 burner in the models FTSP-S/1P... - FTSP-S/1G... - FTMP-S/1G... - LTMP-S/1G...
  - . nr.2 burners in the models FTSP-S/2P... - FTSP-S/1G1P... - FTMP-S/2G... - LTMP-S/2G...
  - . nr.3 burners in the models FTSP-S/3G... - FTMP-S/3G... - LTMP-S/3G...
  - . nr.4 burners in the models FTMP-S/4G... - LTMP-S/4G...
- High efficiency gas burners with three flame tubes, gas safety tap, thermocouple, piezoelectric ignition and temperature setting min./max.
- Cool-grip knobs of special heat proof material
- AISI 304 18/10 stainless steel adjustable legs

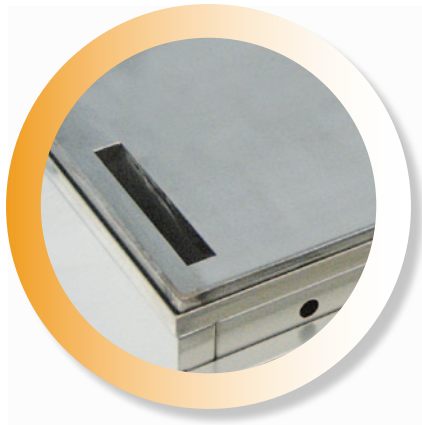
## PLAQUE / FRY-TOP POUR PIADINA ET SAUCISSE

- Structure entièrement réalisée en acier inoxydable AISI 304 18/10
- Modèles sans support (...BB), ouverts (...BA), ou fermés avec portes (...BC),
- Plan de cuisson réalisé en acier doux:
- \* lisse sur les modèles FTSP/... - FTMP/... - LTMP/...
- \* avec rebord sur 4 côtés, évacuation latérale et petit tiroir ramasse-graisse, sur les modèles FTSPS/... - FTMPS/... - LTMPS/...
- Cheminée arrière pour évacuation fumées
- Brûleurs gaz haut rendement:
  - . nr.1 brûleur sur les modèles FTSP-S/1P... - FTSP-S/1G... - FTMP-S/1G... - LTMP-S/1G...
  - . nr.2 brûleurs sur les modèles FTSP-S/2P... - FTSP-S/1G1P... - FTMP-S/2G... - LTMP-S/2G...
  - . nr.3 brûleurs sur les modèles FTSP-S/3G... - FTMP-S/3G... - LTMP-S/3G...
  - . nr.4 brûleurs sur les modèles FTMP-S/4G... - LTMP-S/4G...
- Brûleurs haut rendement avec robinet gaz de sécurité, thermocouple et allumage piézo-électrique
- Soupape de sûreté à gaz, avec réglage max-min, thermocouple, veilleuse et allumage piezo
- Manettes en matériau athermique
- Pieds réglables en acier inox AISI 304 18/10

# Fry-Top CUOCIPIADINA

## ● FRY-TOP PARA PIADINA

- Estructura totalmente fabricada en acero inoxidable AISI 304 18/10
- Modelos sobremesa (...BB), sobre compartimento abierto (...BA), o cerrado con puertas (...BC)
- Encimera de acero:
  - \* lisa en los modelos FTSP/... - FTMP/... - LTMP/...
  - \* lisa con peto antisalpicaduras perimétrico, con oyo de desagüe y cajón recoge-grasas extraíble, en los modelos FTSPS/... - FTMP/... - LTMP/...
- Salida de vahos trasero
- Quemadores de alto rendimiento:
  - . nr.1 quemador en los modelos FTSP-S/1P... - FTSP-S/1G... - FTMP-S/1G... - LTMP-S/1G...
  - . nr.2 quemadores en los modelos FTSP-S/2P... - FTSP-S/1G1P... - FTMP-S/2G... - LTMP-S/2G...
  - . nr.3 quemadores en los modelos FTSP-S/3G... - FTMP-S/3G... - LTMP-S/3G
  - . nr.4 quemadores en los modelos FTMP-S/4G... - LTMP-S/4G...
- Quemadores de alto rendimiento con tres tubos llama, válvula de seguridad, termopar, encendido piezoeléctrico y regulación de la temperatura min./max.
- cajón recoge-gotas extraíble bajo de los quemadores
- Llave con válvula regulación mín-máx, termopar, llama piloto y encendido piezo
- Mandos de material atérmico
- Patas regulables en acero inoxidable AISI 18/10



Modello Model Modell Modèle Modelo	Dimensioni Dimensions Außenabmessungen Dim. Exterieur Dim. Exteriores	Modello Model Modell Modèle Modelo	Dimensioni Dimensions Außenabmessungen Dim. Exterieur Dim. Exteriores	Potenza Power Leistung Puissance Potencia	Dim. Piastra Griddle plate dim. Plattenabmessung Dim. De la plaque Sup.de la plancha
	mm	... GG ...BA ...BC	mm	kW	mm
FTSP/1P.BB	470x500x270h	FTSP/1P...	470x500x850h	6,8	460x450
FTSP/1G.BB	710x500x270h	FTSP/1G...	710x500x850h	13,0	700x450
FTSP/2P.BB	780x500x270h	FTSP/2P...	780x500x850h	13,6	770x450
FTSP/1G1P.BB	1020x500x270h	FTSP/1G1P...	1020x500x850h	19,8	1010x450
FTSP/2G.BB	1260x500x270h	FTSP/2G...	1260x500x850h	26,0	1250x450
FTSP/3G.BB	1820x500x270h	FTSP/3G...	1820x500x850h	39,0	1810x450
FTMP/1G.BB	430x700x360h	FTMP/1G...	430x700x850h	9,4	420x620
FTMP/2G.BB	800x700x360h	FTMP/2G...	800x700x850h	18,8	790x620
FTMP/3G.BB	1150x700x360h	FTMP/3G...	1150x700x850h	28,2	1140x620
FTMP/4G.BB	1500x700x360h	FTMP/4G...	1500x700x850h	37,6	1490x620
FTMP/5G.BB	1850x700x360h	FTMP/5G...	1850x700x850h	47,0	1840x620
FTMP/6G.BB	2200x700x360h	FTMP/6G...	2200x700x850h	56,4	420x620
LTMP/1G.BB	430x700x360h	LTMP/1G...	430x700x850h	6,0	2190x620
LTMP/2G.BB	800x700x360h	LTMP/2G...	800x700x850h	12,0	790x620
LTMP/3G.BB	1150x700x360h	LTMP/3G...	1150x700x850h	18,0	1140x620
LTMP/4G.BB	1500x700x360h	LTMP/4G...	1500x700x850h	24,0	1490x620
LTMP/5G.BB	1850x700x360h	LTMP/5G...	1850x700x850h	30,0	1840x620
LTMP/6G.BB	2200x700x360h	LTMP/6G...	2200x700x850h	36,0	2190x620
FTSPS/1P.BB	470x500x295h	FTSPS/1P...	470x500x850h	6,8	445x435
FTSPS/1G.BB	710x500x295h	FTSPS/1G...	710x500x850h	13,0	685x435
FTSPS/2P.BB	780x500x295h	FTSPS/2P...	780x500x850h	13,6	755x435
FTSPS/1G1P.BB	1020x500x295h	FTSPS/1G1P...	1020x500x850h	19,8	995x435
FTSPS/2G.BB	1260x500x295h	FTSPS/2G...	1260x500x850h	26,0	1235x435
FTSPS/3G.BB	1820x500x295h	FTSPS/3G...	1820x500x850h	39,0	1795x435
FTMPS/1G.BB	430x700x385h	FTMPS/1G...	430x700x850h	9,4	405x605
FTMPS/2G.BB	800x700x385h	FTMPS/2G...	800x700x850h	18,8	775x605
FTMPS/3G.BB	1150x700x385h	FTMPS/3G...	1150x700x850h	28,2	1125x605
FTMPS/4G.BB	1500x700x385h	FTMPS/4G...	1500x700x850h	37,6	1475x605
FTMPS/5G.BB	1850x700x385h	FTMPS/5G...	1850x700x850h	47,0	1825x605
FTMPS/6G.BB	2200x700x385h	FTMPS/6G...	2200x700x850h	56,4	2175x605
LTMPS/1G.BB	430x700x385h	LTMPS/1G...	430x700x850h	6,0	390x605
LTMPS/2G.BB	800x700x385h	LTMPS/2G...	800x700x850h	12,0	760x605
LTMPS/3G.BB	1150x700x385h	LTMPS/3G...	1150x700x850h	18,0	1110x605
LTMPS/4G.BB	1500x700x385h	LTMPS/4G...	1500x700x850h	24,0	1460x605
LTMPS/5G.BB	1850x700x385h	LTMPS/5G...	1850x700x850h	30,0	1810x605
LTMPS/6G.BB	2200x700x385h	LTMPS/6G...	2200x700x850h	36,0	2160x605

# Fry-Top CUOCIPIADINA

Modello Model Modell Modèle Modelo	Dimensioni Dimensions Außenabmessungen Dim. Exterieur Dim. Exteriores	Modello Model Modell Modèle Modelo	Dimensioni Dimensions Außenabmessungen Dim. Exterieur Dim. Exteriores	Potenza Power Leistung Puissance Potencia	Dim. Piastra Griddle plate dim. Plattenabmessung Dim. De la plaque Sup.de la plancha
	mm	... GG ...BA ...BC	mm		mm
FTSP/47E.BB	470x500x270h	FTSP/47E...	470x500x850h	kW 2,2 AC230v 50Hz 9Amp	460x450
FTSP/71E.BB	710x500x270h	FTSP/71E...	710x500x850h	kW 2,2 AC230v 50Hz 9Amp	700x450
FTSP/78E.BB	780x500x270h	FTSP/78E...	780x500x850h	kW 4,4 AC230v 50Hz 18Amp	770x450
FTSP/102E.BB	1020x500x270h	FTSP/102E...	1020x500x850h	kW 4,4 AC230v 50Hz 18Amp	1010x450
FTSP/126E.BB	1260x500x270h	FTSP/126E...	1260x500x850h	kW 4,4 AC230v 50Hz 18Amp	1250x450
FTSP/182E.BB	1820x500x270h	FTSP/182E...	1820x500x850h	kW 6,6 AC400v 50Hz 27Amp	1810x450
FTSPS/47E.BB	470x500x295h	FTSPS/47E...	470x500x850h	kW 2,2 AC230v 50Hz 9Amp	445x435
FTSPS/71E.BB	710x500x295h	FTSPS/71E...	710x500x850h	kW 2,2 AC230v 50Hz 9Amp	685x435
FTSPS/78E.BB	780x500x295h	FTSPS/78E...	780x500x850h	kW 4,4 AC230v 50Hz 18Amp	755x435
FTSPS/102E.BB	1020x500x295h	FTSPS/102E...	1020x500x850h	kW 4,4 AC230v 50Hz 18Amp	995x435
FTSPS/126E.BB	1260x500x295h	FTSPS/126E...	1260x500x850h	kW 4,4 AC230v 50Hz 18Amp	1235x435
FTSPS/182E.BB	1820x500x295h	FTSPS/182E...	1820x500x850h	kW 6,6 AC400v 50Hz 27Amp	1795x435
FTMP/1E.BB	430x700x360h	FTMP/1E...	430x700x850h	kW 2,2 AC230V 50Hz 9Amp	420x620
FTMP/2E.BB	800x700x360h	FTMP/2E...	800x700x850h	kW 4,4 AC230V 50Hz 18Amp	790x620
FTMP/3E.BB	1150x700x360h	FTMP/3E...	1150x700x850h	kW 6,6 AC400V 50Hz 27Amp	1140x620
FTMP/4E.BB	1500x700x360h	FTMP/4E...	1500x700x850h	kW 8,8 AC400V 50Hz 36Amp	1490x620
FTMP/5E.BB	1850x700x360h	FTMP/5E...	1850x700x850h	kW 11,0 AC400V 50Hz 45Amp	1840x620
FTMP/6E.BB	2200x700x360h	FTMP/6E...	2200x700x850h	kW 13,2 AC400V 50Hz 54Amp	420x620
FTMPS/1E.BB	430x700x385h	FTMPS/1E...	430x700x850h	kW 2,2 AC230V 50Hz 9Amp	405x605
FTMPS/2E.BB	800x700x385h	FTMPS/2E...	800x700x850h	kW 4,4 AC230V 50Hz 18Amp	775x605
FTMPS/3E.BB	1150x700x385h	FTMPS/3E...	1150x700x850h	kW 6,6 AC400V 50Hz 27Amp	1125x605
FTMPS/4E.BB	1500x700x385h	FTMPS/4E...	1500x700x850h	kW 8,8 AC400V 50Hz 36Amp	1475x605
FTMPS/5E.BB	1850x700x385h	FTMPS/5E...	1850x700x850h	kW 11,0 AC400V 50Hz 45Amp	1825x605
FTMPS/6E.BB	2200x700x385h	FTMPS/6E...	2200x700x850h	kW 13,2 AC400V 50Hz 54Amp	2175x605



Via F.lli Lumiere, 11 (Z.I. Villa Selva) - 47122 Forlì (FC) Italy  
Tel. (+39) 0543 78 29 20 - Fax (+39) 0543 78 29 25 - [casta@casta.com](mailto:casta@casta.com)

[www.casta.com](http://www.casta.com)